



Head Office
 No. 4 The Terrace, Westway Office Park,
 Westville, KZN, 3629

PO Box 15108, Westmead, KZN, 3608
 South Africa

t +27 31 700 5460
 f +27 31 700 5471
 e support@wearcheck.co.za

South African Branches

Bloemfontein +27 51 101 0930
 Cape Town +27 21 001 2100
 Eastern Cape +27 41 360 1535
 Gauteng +27 11 392 6322
 Middelburg +27 13 246 2966
 Northern Cape +27 66 474 8628
 Rustenburg +27 83 938 1410
 Steelpoort +27 71 269 1332

International Branches

Botswana +267 311 6829
 Ghana +233 20 896 8484
 India +91 44 4557 5039
 Mozambique +258 84 697 7006
 Namibia +264 81 229 6926
 Pakistan +92 32 3425 7278
 UAE +917 6 740 1700
 Uganda +256 78 529 6994
 Zambia +260 212 210 161
 Zimbabwe +263 24 244 6369

A division of Synerlytic Services (Pty) Ltd
 Reg. No. 1989/000201/07 | VAT No. 4520131816

Doc no :04p01

Revision no : Oct 2020

SCOPE OF THE INTEGRATED MANAGEMENT SYSTEM (IMS)

1. **WEARCHECK**, a division of Synerlytic Services, provides a condition monitoring service by analysing relevant fluids and filters and as such, an entity that can be held legally responsible in terms of the requirements of ISO/IEC 17025:2017. In meeting customer and environmental expectations, we will maintain a documented Integrated Management System that meets the requirements of ISO 9001:2015, ISO 14001:2015 and ISO/IEC 17025:2017.

The Scope for the ISO 9001:2015 certification covers the design, development and provision of condition monitoring by analysing relevant fluids, filters and plant performance management through integrated technologies.

The Scope for the ISO 14001:2015 certification covers the design, development and provision of condition monitoring analytical services.

2. Scope includes the following:

Site	Physical Address	ISO 9001:2015	ISO 14001:2015	ISO/IEC 17025:2017
Durban	No 4 The Terrace, Westway Office Park, Westville	X	X	
Johannesburg	30 Electron avenue Isando	X		
WSL	30 Electron avenue Isando	X		X
Middelburg	Unit 7A, Nungu Industrial Park, 13 Mandela Drive, Middelburg	X		

3. Exclusions: None

4. Stake holders: Refer Stakeholder register (w230)

5. Context: Refer SWOT analysis (w229)

6. Outsourced Processes: Refer procedure 08p63

Directors: Tabane Matheolane, Edward Pitsi, Jon Hillary | Company Secretary: Yvette Dembskey | Form w208 | Revision date October 2020

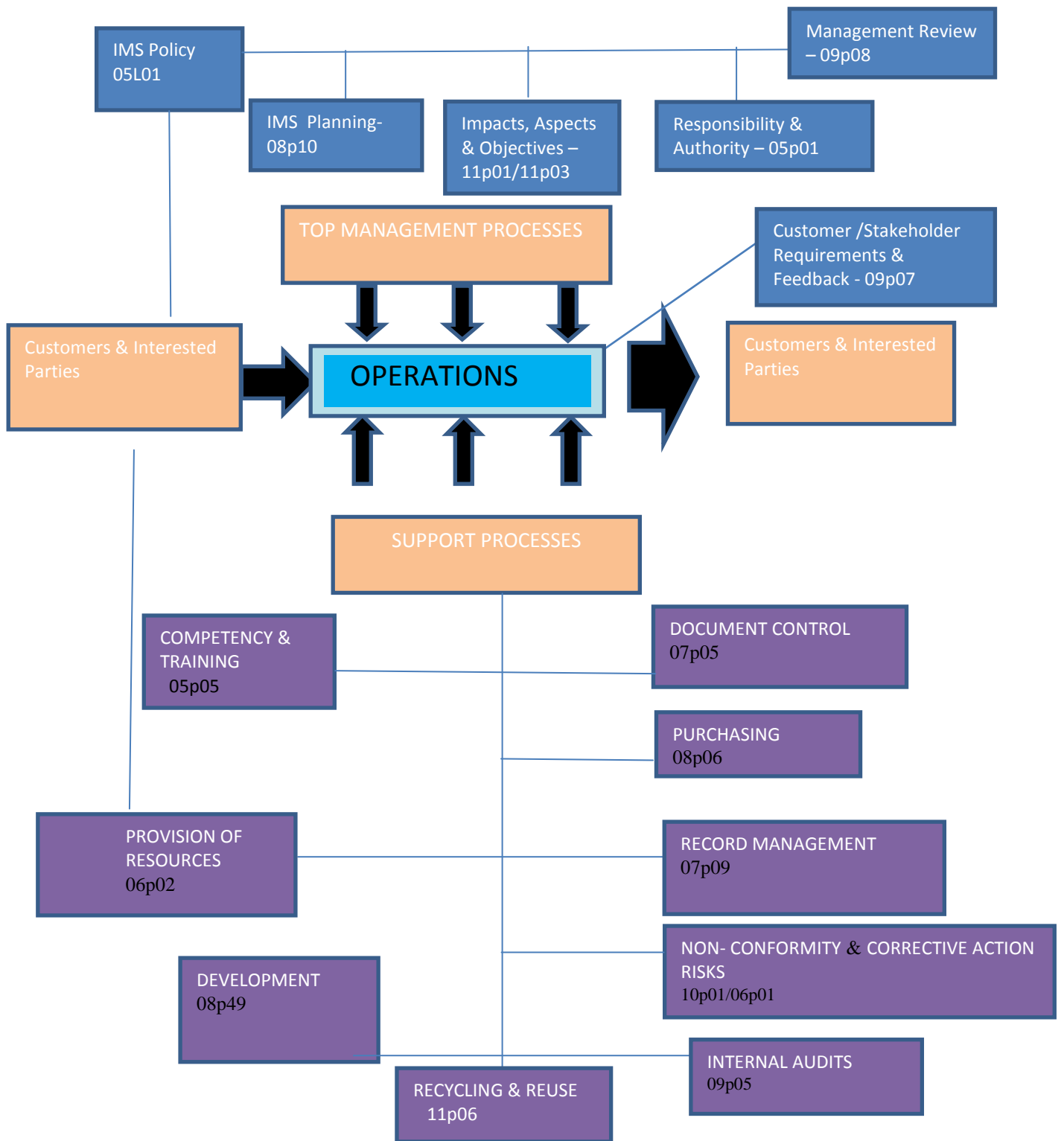
SABS ISO 9001 | ISO 14001 | ISO/IEC 17025



Condition Monitoring Specialists

www.wearcheck.co.za

7. Sequence & Interaction:



8. Contents: refer content page

