

## SEASON'S GREETINGS

As the year draws to a close and we reflect on our achievements this year, it is a fitting time to consider our valued customers who have made our progress possible. We thank you for your loyal support and offer our warm good wishes for a peaceful festive season and a prosperous New Year.

Instead of sending out Christmas cards, we will continue to provide financial assistance for programmes benefiting the children of the special needs class at New Germany Primary School (see article on back page).



## WEARCHECK'S NEW SMS REPORT

**WearCheck customers will be pleased to know that they now have access to a new service which sends them an SMS if they have an urgent or critical sample.**

Says managing director, Neil Robinson. 'The new service is basically a direct alert to maintenance managers that a full report has been sent to them in the normal way for a critical or urgent sample. This is part of our continuing efforts to speed up turnaround time and ease the pressures faced by customers on a daily basis.'

The SMS includes the sample number, machine and component and indicates whether the sample is urgent or critical.

Any customer can sign up for the new free service as part of their package. For more information contact WearCheck customer support.

## NEWS FLASH!

WearCheck opens new Middelburg laboratory – read about it on pages 4 and 5.

## IT'S A SMALL WORLD

WearCheck receives enquiries from all over the world - most recently from Sakoa Coal in Madascar and from Wakefield College in the United Kingdom.

## MILLIONS MILESTONES



Diagnostician Rowan Maartens (left) diagnosed his one and a half millionth sample in September and diagnostic manager John Evans achieved his one million milestone in October. Hearty congratulations to both and 'keep on truckin'!

## OUT AND ABOUT

- Diagnostician Steven Lumley gave a presentation on the benefits of oil analysis at a Wilson Bayley Homes 'bosberaad' for more than 70 staff members in Parys in September.
- Wade de Chalain did a series of three oil analysis awareness presentations on behalf of WearCheck for Komatsu technical staff at their remanufacturing centre in Isando in August, September and October.

# MAKING HEADWAY

WearCheck welcomes three new laboratory staff members - Boniface Yuwama, Reshma Soojan and Kefilwe Ntshabele – and congratulates Meshach Govender on his promotion to junior chemist. All are highly qualified and experienced diplomates or graduates working in WearCheck's four laboratories in South Africa and Zambia.

## ON-SITE AT LUMWANA MINE, ZAMBIA



Boniface Yuwama is the new lab technician responsible for running WearCheck's on-site lab at Lumwana copper mine in Zambia.

Before joining WearCheck, Boniface worked for nine years for Alfred H Knight (Zambia) Limited as technical advisor: oil condition monitoring, where he was responsible for the analysis of lubricants and fuels, and customer support. He

also held lubrication clinics for clients from the copper mines and allied industries - including Zambia Sugar Company, Barloworld Equipment and Sandvik.

Boniface was also involved in the testing of lubricants and fuels for oil marketing companies like BP, Caltex and Total and for the Zambian regulatory authorities controlling diesel and petrol.

He has a diploma in industrial science from Copperbelt University but, after working as a trainee industrial engineer for Zambia Consolidated Copper Mines for four years, decided on a career change to condition monitoring. He underwent a year's intensive training which included an attachment to the company's Deutz engine rebuild workshop for three months and went on to manage oil analysis programmes for the organisation's various engineering divisions.

## SUPERVISING THE SOS LAB



SOS lab supervisor, Reshma Soojan, has a national diploma in analytical chemistry from ML Sultan Technikon in Durban.

Reshma has eight years of laboratory experience, working her way up from a lab technician for Engen Petroleum to her most recent position, lab manager for Metropolitan Oil (Forte Oil). Here she was responsible for operating and maintaining a wide variety of instruments, doing product trials, conducting internal audits,

Reshma Soojan

quality management and training.

## NEW TRANSFORMER LAB ASSISTANT



Kefilwe Ntshabele

Transformer lab assistant, Kefilwe Ntshabele, has varied laboratory experience – at the Institute for Water Quality Studies of the Department of Water Affairs and Forestry, a four-year stint as research assistant at the University of Cape Town's chemical engineering laboratory, as a quality analyst for Chemserve Systems and as an assistant analyst for Rand Refinery Limited. Her current duties are to test transformer oil and fuels in WearCheck's speciality laboratory.

Kefilwe has a national diploma in biotechnology from Tshwane University of Technology and is currently completing a BTech degree in this subject at the same university.

## DEVELOPING BREAKDOWN MAINTENANCE



Meshach Govender

Junior chemist, Meshach Govender, joined WearCheck as a laboratory technician in September 2007, after completing a BSc degree in chemistry at the University of Kwa-Zulu Natal, Westville. He is currently undertaking pioneering work in breakdown maintenance and the integration of WearCheck's new Ruler instrument, which detects the remaining useful life of an oil, into the Pinetown laboratory. Watch out for

details on the Ruler in the next issue of Monitor and a forthcoming technical bulletin.

## PRODUCT PICK

### Protect your oil

WearCheck supplies the Oil Safe range of oil dispensing containers and drums, which are designed to protect your expensive lubricants from contamination. They are heat and chemical resistant and manufactured to withstand the toughest conditions. The drums come in four sizes with a range of interchangeable lids and spouts. Product code: OSDSL

For further details email [support@wearcheck.co.za](mailto:support@wearcheck.co.za)

# FILM FUN - WEARCHECK ON SCREEN

## SPECIALITY LAB FEATURES IN JACOB'S CROSS

WearCheck clients may recognise the Isando speciality lab when they watch Jacob's Cross on M-Net on December 10 and 17. The producers of this popular South African drama needed a laboratory which could represent a sophisticated uranium testing facility to feature actress Mary-Ann Barlow as Francine Cullinan trying to establish whether the uranium (in the storyline) is real or fake. The producers of the show described the WearCheck lab as 'stunning and spacious with a very modern look'.



An M-Net production team prepares to film actress Mary-Ann Barlow in WearCheck's speciality lab in a scene for Jacob's Cross

## DIVING INSTRUCTOR TO THE STARS

WearCheck admin clerk Santosh Roopnarain found himself in deep water with Bollywood movie stars when he was selected to be a diving instructor for the film, Luck, being shot in Durban in September. The film stars Imran Khan (nephew of Amir), Shruti Haasan (daughter of Kamal) and Ravi Kishen.

Santosh was one of the professional instructors

to give the actors an intensive five-day scuba diving course to prepare them for open water diving. He also acted as Kishen's stunt double in an action sequence with a very lifelike robotic shark. He was impressed with the down-to-earth attitude of the stars and thoroughly enjoyed the whole experience.



WearCheck's Santosh Roopnarain gets into deep water with one of the stars from Bollywood movie, Luck, soon to hit local screens.



Taking a break during diving training are (from left) Shruti Haasan, Imran Khan, Valentin Mwaka, Erin Cloutier, instructor Kyle Shamnel, Thean Kruger, instructor Pam Le Noury and WearCheck's Santosh Roopnarain.

## HIGHLIGHT YOUR SUCCESS

If you have an example of how oil analysis has helped you, we would be happy to feature this in Monitor. Email [melanie@wearcheck.co.za](mailto:melanie@wearcheck.co.za) and we will write the article from information supplied by you.

## ONS PRAAT AFRIKAANS

Dit is 'n algemene wanopvatting dat ons personeel in Pinetown, anders as in ons Johannesburgse takkantoor, nie Afrikaans magtig is nie.

Om in Afrikaans in Pinetown gehelp te word, kontak Lorain de Bruin vir NetCheck/databasis navrae, Daan Burger vir diagnose navrae en Kay Meyrick vir kliente navrae.

## LUBE TIP

### QUESTION:

Why can't my analysis lab tell me which specific brand name of oil is in service?

### ANSWER:

Some commercial products contain specific tracers to assist oil companies in identifying their own products. However, those properties routinely monitored by oil analysis services are elementally generic and include elements commonly incorporated in many lubricants of the same classification and purpose. An analysis lab can confirm the same product is in service as your referenced oil and whether it is typical of the type of oil (application) desired. However, due to similarities, fluctuations in batches, and formulation changes, specific brand name identification can be extremely difficult to impossible.

- Tip provided by Analysts Inc  
[www.analystsinc.com](http://www.analystsinc.com)

# WEARCHECK OPENS NEW LAB IN MIDDELBURG

WearCheck opened a new laboratory in Middelburg, Mpumalanga in November for the convenience of customers in the region which, in addition to being a full service oil analysis laboratory, will also offer a thermography service.

'WearCheck Middelburg, as the new laboratory will be called, is in fact a joint venture with Minopex,' said WearCheck managing director, Neil Robinson. 'Using the Minopex laboratory as a foundation we have integrated WearCheck's systems and software and additional analytical capabilities with the existing set-up to ensure that customers receive the same level of service offered by all WearCheck facilities.'

Thermographer, Jaco Stapelberg, and technical sales and support consultant, Chris Hattingh, will continue to work for WearCheck Middelburg and a new laboratory technician, Isaac Fambarega, has joined the team.

'Samples submitted to the Middelburg lab will be processed there,' Neil said. 'The results will mimic those of WearCheck's Pinetown laboratory and will be incorporated directly into the company database where they will then be diagnosed by the Pinetown diagnosticians.'

Existing WearCheck customers who choose to use the Middelburg lab will receive their reports in the same way they normally do and their data base will be maintained exactly as before.

'It will be run on the same principles as the Barloworld SOS lab in Johannesburg and our on-site lab at Lumwana Mine in Zambia. This basically means that any WearCheck sample can be submitted to any one of our labs and the process will be seamless. We have found this system to operate efficiently and to offer real benefits to customers in terms of accessibility, convenience and improved turnaround time.'

The Middelburg Lab will be incorporated into WearCheck's quality and environmental management systems with a view to obtaining ISO 9001 and 14001 registration as soon as possible.



WearCheck's new laboratory in Middelburg, Mpumalanga

## WearCheck Middelburg

Unit 7a, Kilo Street, Middelburg

Tel: (013) 246-2685, 246-2966

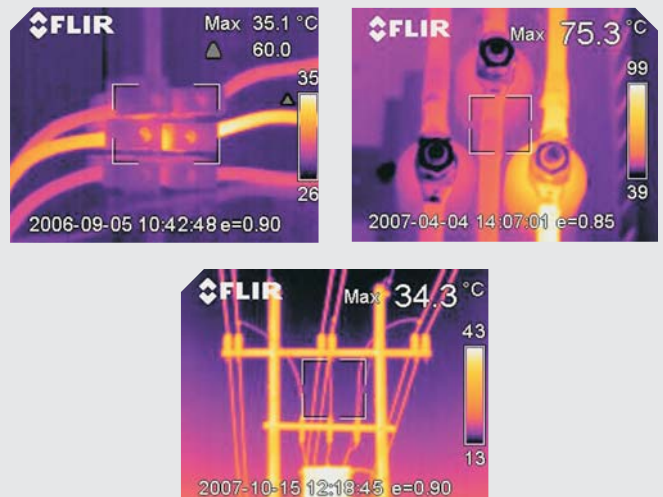
Fax: (013) 246-2685

## NEW THERMOGRAPHY SERVICE

WearCheck Middelburg will offer a full on-site thermography service which includes:

- Electrical and thermal heat loss inspections in plants, buildings and refineries
- Electrical motor inspections
- Evaluation of moisture contamination in plants and buildings
- Concrete integrity inspections
- Concrete water-heated floor inspections for leaks and temperature distribution
- Detection of flue gas leaks in power plant boilers
- Detection of flat roof leaks in plants and buildings
- Power generation and generator inspections
- Sub-station electrical inspections and evaluation of transformers and capacitors
- Mechanical inspections of bearings, etc.
- Evaluations of heat ventilation and air conditioning
- Detection of cold storage cooling losses
- Inspection of heat exchangers
- Surveys of high voltage power lines
- Overhead urban and rural electrical distribution inspections

The company's experienced technicians will conduct on-site inspections, surveys and evaluations, undertaking infrared scanning and filming video footage where necessary. Reports will feature analysis details, photographs and thermo digital images. Customised reports to suit the specific requirements of customers may become available in the future, along with the coupling of thermography and oil analysis results in one report.



Examples of thermo images of components

# MEET THE MIDDELBURG LAB STAFF

## Jaco Stapelberg



Jaco Stapelberg

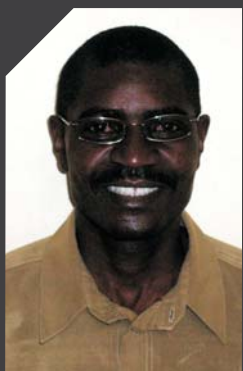
Thermographer Jaco Stapelberg is a qualified electrician and has an N3 Technical diploma from Witbank Technical College. He also obtained a sales and marketing diploma through Damelin College with distinction and has an ITC Level 2 qualification in thermography.

Before joining WearCheck, Jaco was employed to conduct thermography and oil analysis on mechanical and electrical equipment for the condition monitoring division of Minopex Engineering Services. He was responsible for taking and processing samples, report generation and customer relations.

Prior to that he worked for Highveld Steel and Vanadium Corp (HSVC) as an electrician for six years, undertaking thermography for the entire HSVC group. This involved testing faulty and rewind AC and DC motors according to set standards, maintaining the LV side of the company, general predictive maintenance, doing installations and designs and working on overhead cranes. He was also part of a specialised group in charge of HSVC's electrical distribution, undertaking preventive maintenance on all electrical equipment including capacitor banks and transformers. Other responsibilities were inspections of gas lines, arc furnaces, cranes, pumps and bearing assemblies.

Jaco sees himself as a well balanced, enthusiastic and loyal person with the ability to adapt quickly in any situation and work through any problems that might emerge. When he is not indulging his passion for sketching or playing his drums, he can be found playing action cricket, squash and volleyball or honing his karate skills.

## Isaac Fambarega



Isaac Fambarega

Lab technician, Isaac Fambarega, has a higher diploma in applied chemical technology from Bulawayo Polytechnic College in Zimbabwe and 18 years of experience working in laboratories in both Zimbabwe and South Africa.

He started his career in Bulawayo, working in several laboratories, where he progressed from lab technician for Gold Star Sugar to senior quality assurance laboratory

analyst for United Refineries Limited and product development chemist for Ecomed Manufacturing.

He then relocated to South Africa to take up the position of laboratory technician: projects for a company based in Midrand.

Isaac has extensive experience of a wide variety of instruments and tests, process validations and the development of analytical methods. He has also been responsible for staff training and supervision and general laboratory administration.

Isaac describes himself as flexible, innovative and with a passion for excellence. In his spare time he enjoys playing and watching soccer and is an avid follower of the local and international football leagues.

## Chris Hattingh



Chris Hattingh

Technical sales and support consultant, Chris Hattingh, obtained an N3 diploma in engineering from Witbank Technical College, before embarking on a career encompassing fitting, machining, maintenance, condition monitoring and sales for a variety of companies in the mining and industrial sectors.

He completed his trade as a fitter and machinist at BHP Billiton's Vandyksdrift Colliery where he worked for seven years, later becoming their condition monitoring analyst and maintenance specialist.

In this time he became skilled in the monitoring and maintenance of underground production machinery and coal processing plant equipment - including the use of oil analysis, thermography and vibration analysis - and was involved in safety, hazard identification and risk management.

He then worked as a sales representative for filtration specialists, PALL Corporation, for three years providing technical advice on product application and expediting customer reliability improvement plans.

After running his own filtration and fuel/lube dispensing business for two years, he joined Minopex as a condition monitoring analyst.

Chris has attended courses on gases and gas testing, the maintenance of flameproof equipment, infrared thermography, tribology, vibration analysis, sales and management.

His hobbies are fishing, playing poker and testing his skills on the golf course.

# CHILDREN BLOSSOM WITH WEARCHECK'S SUPPORT



Nzuzo Ndlovu (left) and Lwazi Mbhele are part of New Germany Primary School's special needs class which is thriving as a result of several programmes supported by WearCheck.

The children of New Germany Primary School continue to receive welcome support from WearCheck.

The company's most recent donation bought the school much-needed library materials, and the gardening programme for their special needs class continues to flourish.

Teachers Amber Chipps and Ros Standal who run the school's gardening programme were recently invited to address teachers at a 'Food and Food Issues' workshop hosted by the KZN Environmental Education Curriculum Forum at the Botanic Gardens in Durban. Their presentation was entitled 'Accessing resources to develop a food garden'.

The focus of the garden has now moved to cultivating herbs for culinary and medicinal use with a dedicated permaculture section.

Said Ros, 'The children suggested we should extend our efforts to care for the environment so we have started a new project renovating rusty old lockers discarded by a nearby school, following the principle that it is always best to recycle where possible. We are trying to teach the children to see a need and then to fulfill it and we want them to be proud of doing all they can not to be part of a "throw away" society.' With WearCheck's help they have bought all the material needed for the refurbishment.

The teachers are also linking the herb garden to other subjects such as art, by encouraging the children to research famous Impressionist painters and choose a famous garden to paint on canvas after learning the appropriate techniques.

'All of the skills-based education projects are helping to make a real difference in the lives of these children and we are truly grateful for WearCheck's assistance,' Ros said.

## 2009 TRAINING COURSES

COURSE	JOHANNESBURG	PINETOWN	MIDDELBURG
NetCheck: Software	9 February, 8 June, 12 October	11 May	9 March, 7 September
WearCheck 1: Oil analysis orientation	10 February, 9 June, 13 October	12 May	10 March, 8 September
WearCheck 2: Understanding oil analysis	11 February, 10 June, 14 October	13 May	11 March, 9 September
WearCheck 3: Report interpretation	12 February, 11 June, 15 October	14 May	12 March, 10 September
WearCheck 4: Management	13 February, 12 June, 16 October	15 May	13 March, 11 September
Machinery & Lubrication: Level One	2-4 March, 5-7 October	1-3 June	
Machinery & Lubrication: Level Two	5-6 March, 8-9 October	4-5 June	

The WearCheck courses are full day and cost R 1550 plus VAT with the exception of Course 4 which is half day and costs R550 plus VAT.

The Machinery and Lubrication (MLA) courses are run in joint venture with the ABB School of Maintenance. Level One is a three-day course costing R5456.85 plus VAT. Level Two is a two-day course costing R4354.35 plus VAT.

**For all bookings phone Patrys Huggett on (011) 392-6322.**

*If you would prefer to receive future issues of WearCheck Monitor and Technical Bulletin via e-mail instead of in printed form, please e-mail a request to: [support@wearcheck.co.za](mailto:support@wearcheck.co.za)*

### THE LEADER IN OIL AND FUEL ANALYSIS

**KWAZULU-NATAL**  
9 LE MANS PLACE  
WESTMEAD, PINETOWN, RSA  
PO BOX 15108, WESTMEAD 3608  
TEL: +27 31 700 5460  
FAX: +27 31 700 5471  
[support@wearcheck.co.za](mailto:support@wearcheck.co.za)  
[www.wearcheck.co.za](http://www.wearcheck.co.za)



**GAUTENG**  
25 SAN CROY OFFICE PARK  
DIE AGORA RD, CROYDON RSA  
PO BOX 284, ISANDO 1600  
TEL: +27 11 392 6322  
FAX: +27 11 392 6340  
[support@wearcheck.co.za](mailto:support@wearcheck.co.za)  
[www.wearcheck.co.za](http://www.wearcheck.co.za)



Honeywell



Publications are welcome to reproduce articles or extracts from them providing they acknowledge WearCheck Africa, a member of the Set Point group.